



A photograph of a grey double door with vertical glass inserts, set in a brick wall. The door has a silver handle and lock. There are some fallen leaves on the ground in front of the door.

Door Schedule					
Mark	Width	Fire Rating	Height	Level	HARDWARE SET
DOOR 6	5' - 6"	1 HR	7' - 5"	Basement	1
DOOR 5	5' - 5"	1 HR	7' - 4"	Basement	1
DOOR 4	5' - 5"	1 HR	7' - 4"	Basement	1
DOOR 3	3' - 6"	1 HR	7' - 4"	Basement	3
DOOR 2	5' - 4"	1 HR	7' - 3"	FIRST FLOOR	1
DOOR 1	5' - 4"	1 HR	7' - 3"	FIRST FLOOR	1
DOOR 7	5' - 0"	1 HR	6' - 11"	FIRST FLOOR	2



PLATO
STUDIO

**PLATO
MARINAKOS, JR.
ARCHITECT, LLC**

www.plato-studio.com

107 S 2nd Street
4th Floor
Philadelphia, PA 19106
267-866-0930 OFFICE
267-866-0931 DIRECT
plato@plato-studio.com

ARCHITECT SEAL MUST BE IN RED INK

OWNER

Vision Academy Charter
School

ONE CALL #:



SITE SAFETY

It is the responsibility of the general contractor and/or the contractor listed as the licensed entity on the building permit per the municipality to ensure all site safety requirements are in place and followed, prior to, during, and after the commencement of the construction process until they are 100% complete and have received a building certificate of occupancy by governing agencies. The contractor shall be responsible for the safety of all workers, including their sub-contractors' work, Plano Matarnak, Architect LLC, and their professional consultants (associated with these documents) are not responsible for means and methods of construction, and/or site safety including, but not limited to, job site construction safety requirements, standard construction, job site safety, job site safety training of workers, safe work site organization, safety direction and/or safety engineering of required safety equipment, elements, and/or materials. The contractor shall ensure that all site safety measures are in accordance with the governing authorities. Please refer to [OSHA website \(www.osha.gov\)](http://OSHA website (www.osha.gov)) for additional training and information requirements for site safety compliance.

REV	DATE	DESCRIPTION

APPROVAL STAMP

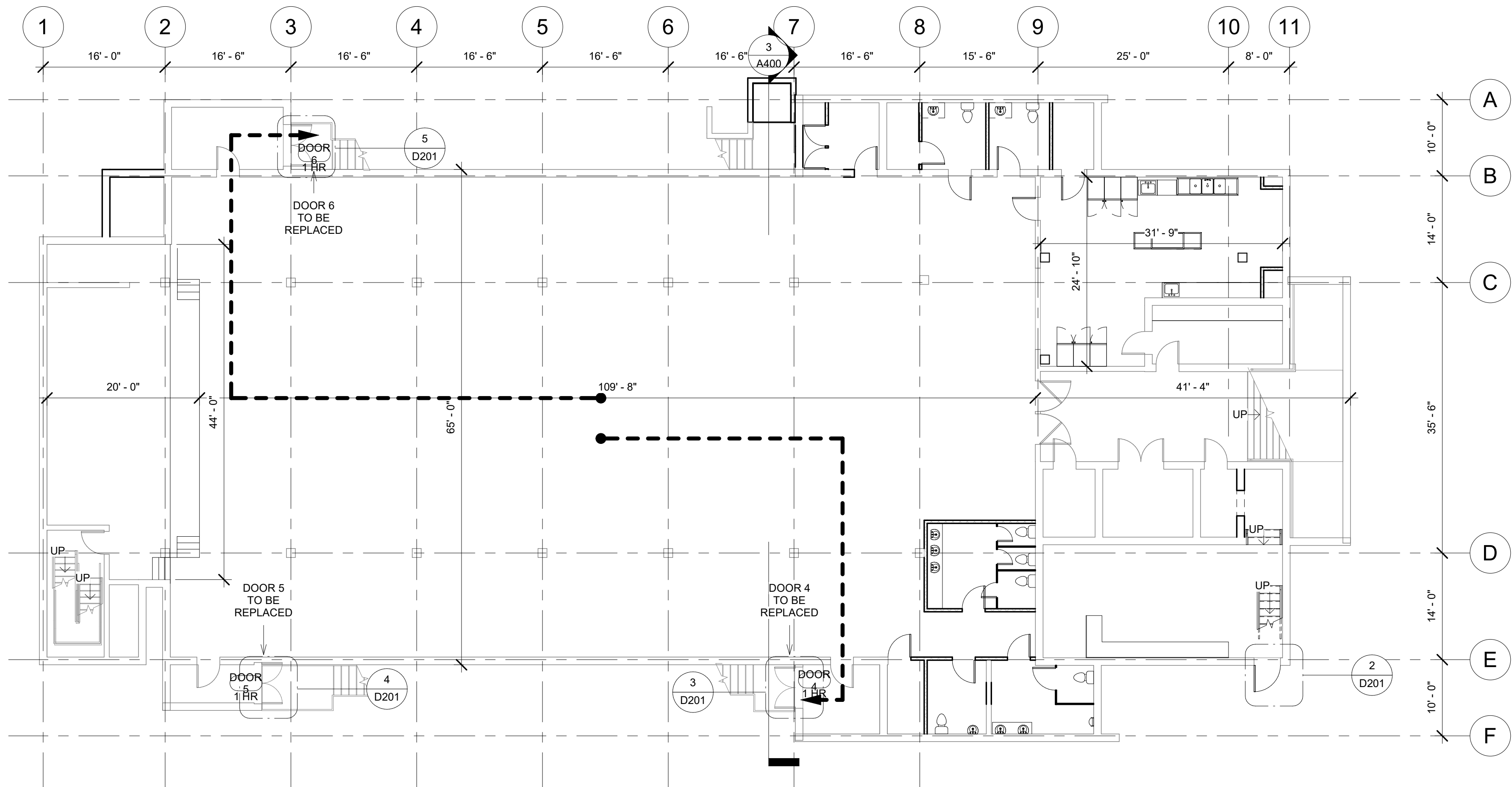
716 EMERSON AVE -
SCHOOL

EXISTING CONDITIONS

Project number	Project Number
Date	Issue Date
Drawn by	Author
Checked by	Checker

D200

Scale As indicated



1 EXISTING BASEMENT PLAN
D201 SCALE: 3/32" = 1'-0"



2 DOOR3
D201 SCALE: 1/16" = 1'-0"



3 DOOR4
D201 SCALE: 1/16" = 1'-0"



4 DOOR5
D201 SCALE: 1/16" = 1'-0"



5 DOOR6
D201 SCALE: 1/16" = 1'-0"



PLATO
MARINAKOS, JR.
ARCHITECT, LLC

www.plato-studio.com

107 S 2nd Street
4th Floor
Philadelphia, PA 19106
267-866-0930 OFFICE
267-866-0931 DIRECT
plato@plato-studio.com

ARCHITECT SEAL MUST BE IN RED INK
OWNER

Vision Academy Charter
School

ONE CALL #:



SITE SAFETY

It is the responsibility of the general contractor and/or the contractor listed as the licensed entity on the building permit per the municipality to ensure all site safety requirements are in place and followed, prior to, during, and after the commencement of the construction process until they are 100% complete and have received a building certificate of occupancy by governing agencies. They are also responsible for any unsafe conditions caused by or related to their sub-contractors' work. Plato Marinakos, Architect LLC and their professional consultants (associated with these documents) are not responsible for means and methods of construction, and/or site safety, including, but not limited to, osha construction safety requirements, standard construction, job site safety, job site safety training of workers, safe work site organization, safety direction and/or safety engineering of required safety elements. It is the sole responsibility of the licensed contractor to ensure that all site safety measures are in accordance with the governing authorities. Please refer to OSHA website (www.osha.gov) for additional training and information requirements for site safety compliance.

REV	DATE	DESCRIPTION

APPROVAL STAMP

716 EMERSON AVE -
SCHOOL

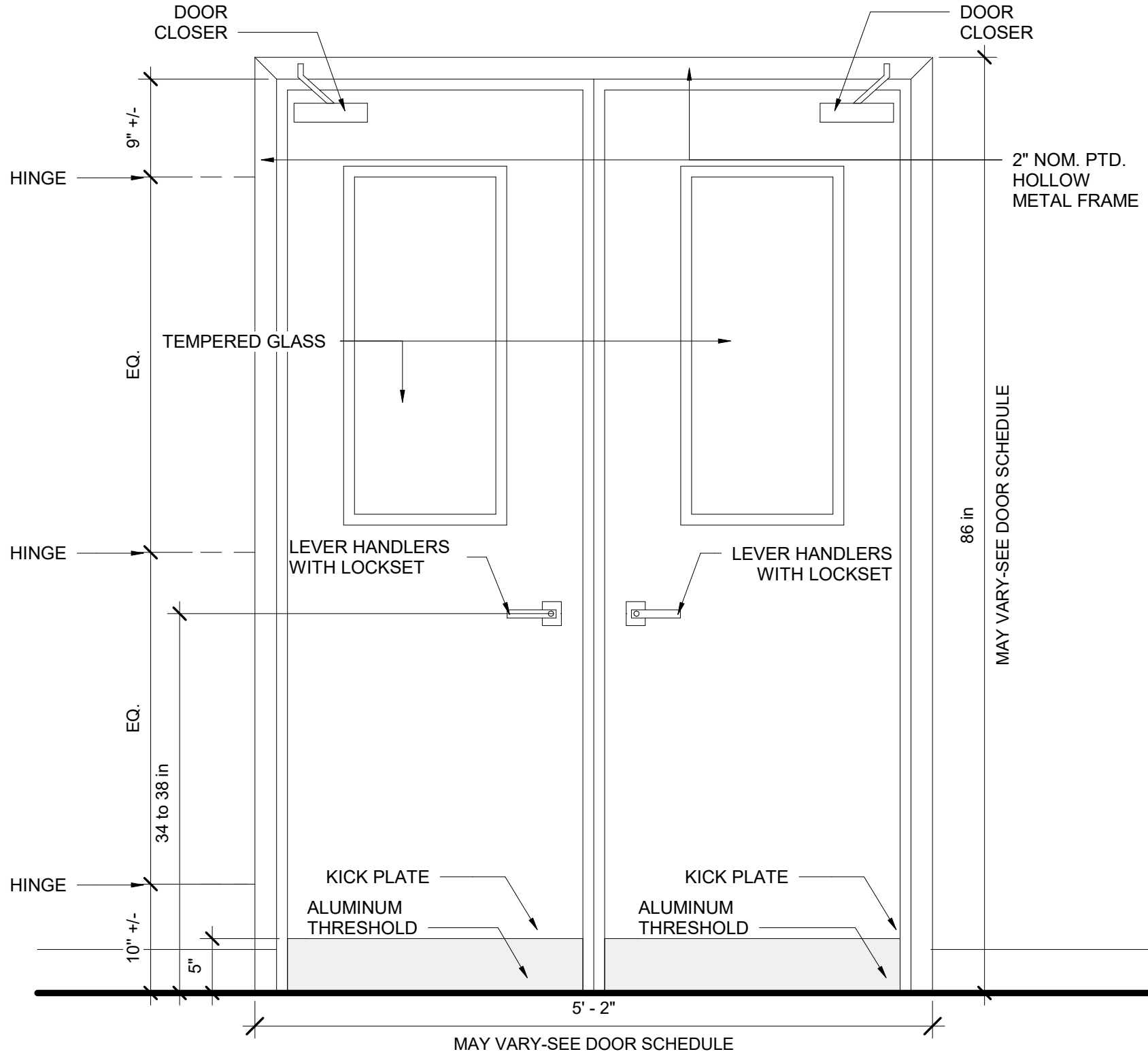
EXISTING CONDITIONS

Project number	Project Number
Date	Issue Date
Drawn by	Author
Checked by	Checker
D201	
Scale	As indicated

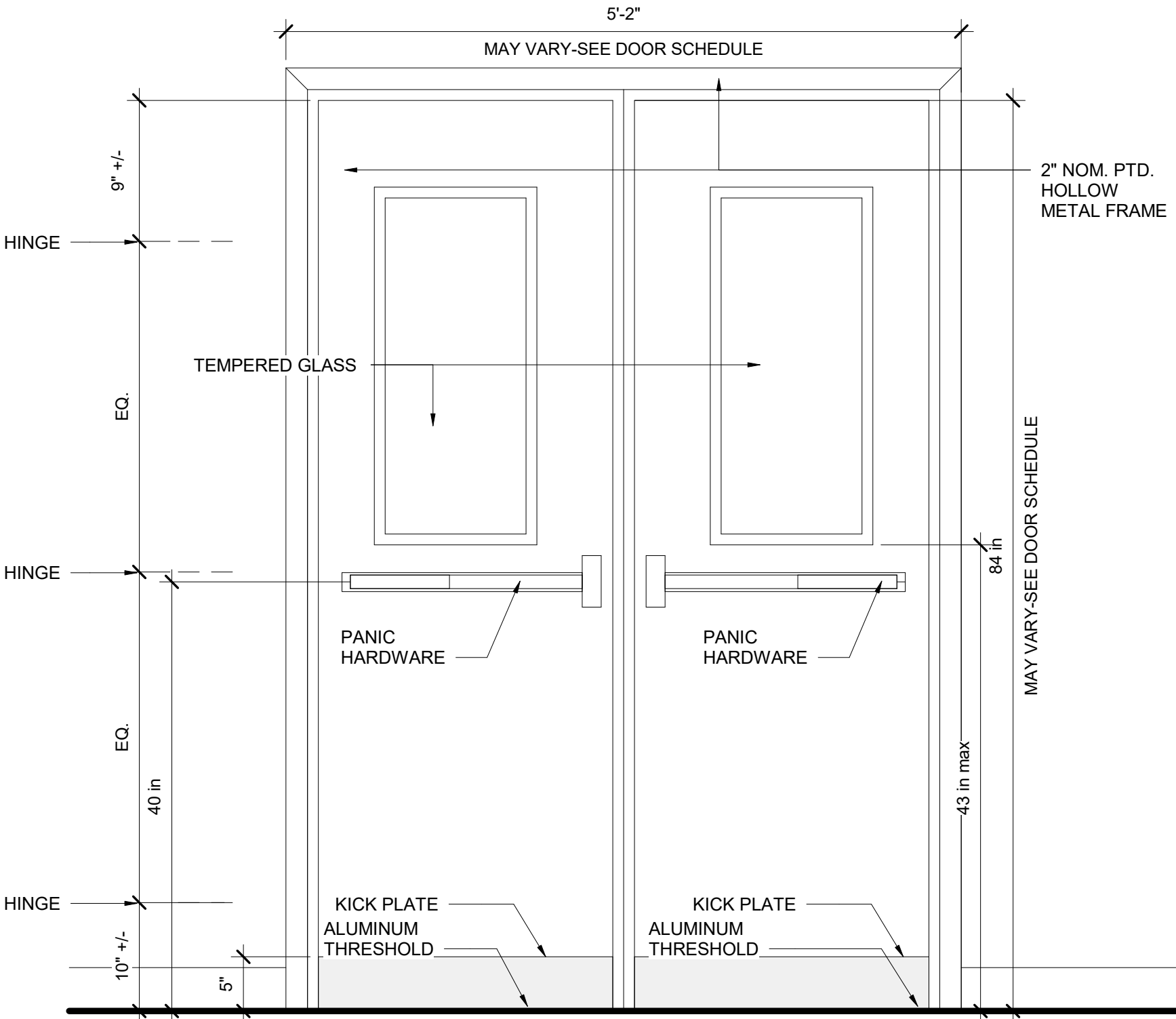
DOOR HARDWARE SET 1

GENERAL

- 1.DOOR HUNG TO THE FRAME WITH HINGES
 - 2.SECURITY LOCKSET
 - 3.THRESHOLD NEEDED
 - 4.SEALED AND PROTECTED DOOR (1HR RATED)
 - 5.NOT ELECTRIFIED DOOR
 - 6.DOOR CLOSER
 - 7.DOOR MUST BE SEALED
- SPECIFIC CONSIDERATIONS
- 1. HEAVY FREQUENCY OF USE
 - 2. EXPOSED TO WEATHER/CLIMATE (ONLY FRONT DOOR)
 - 3. MATERIAL: TEMPERED GLASS AND ALUMINIUM



OUTSIDE THE BUILDING

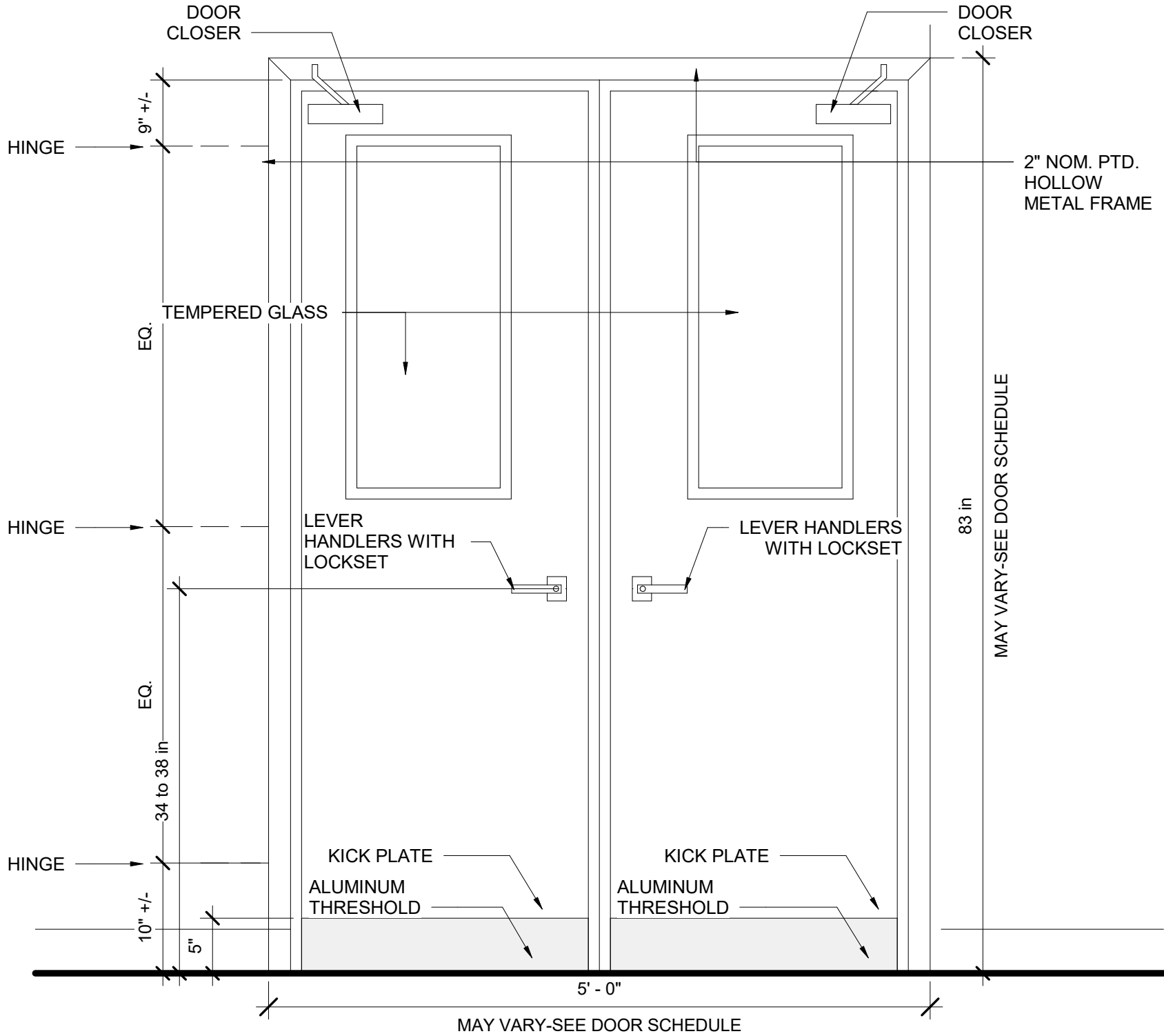


INSIDE THE BUILDING

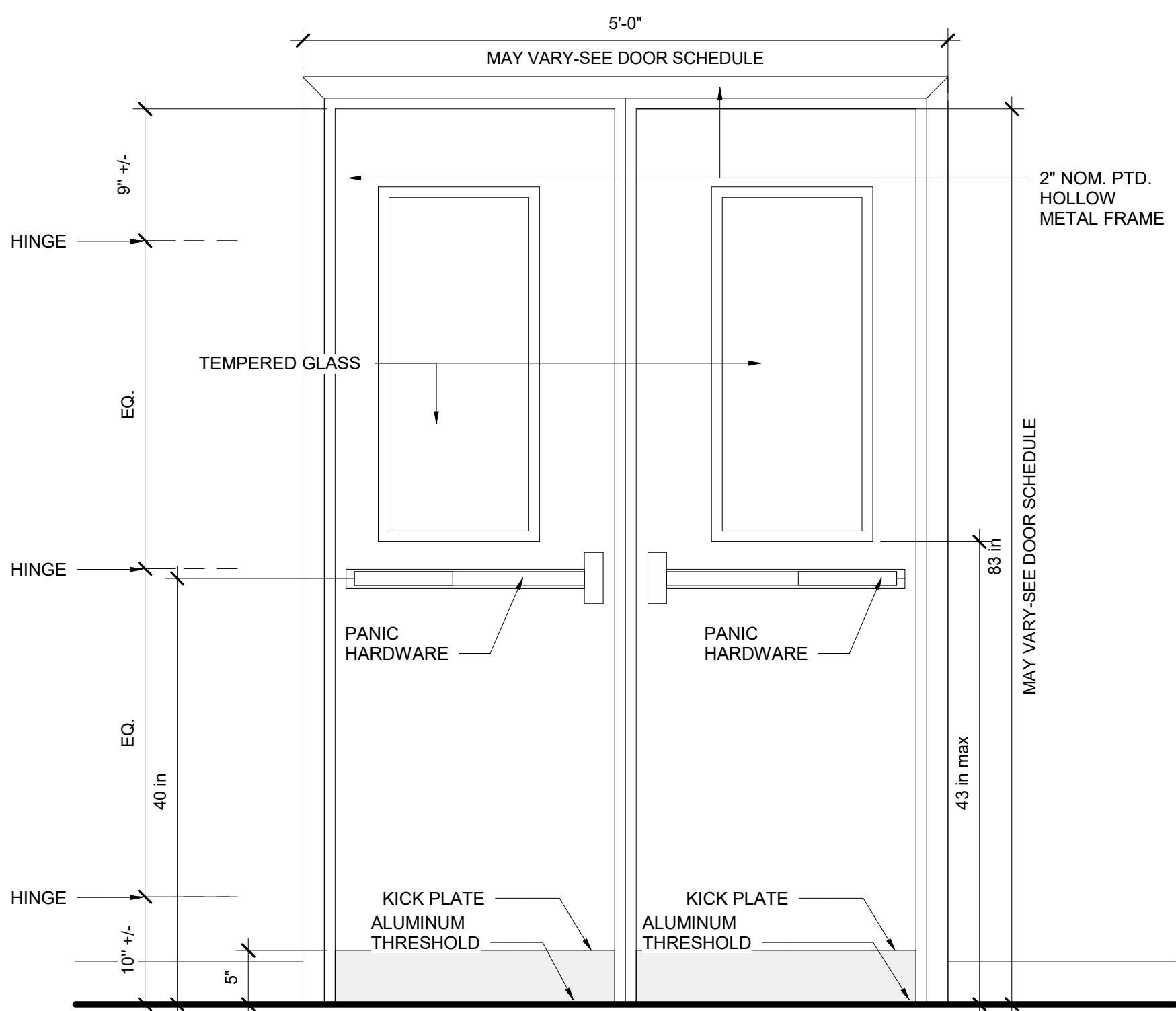
DOOR HARDWARE SET 2

GENERAL

- 1.DOOR HUNG TO THE FRAME WITH HINGES
 - 2.SECURITY LOCKSET
 - 3.THRESHOLD NEEDED
 - 4.SEALED AND PROTECTED DOOR (1HR RATED)
 - 5.NOT ELECTRIFIED DOOR
 - 6.DOOR CLOSER
 - 7.DOOR MUST BE SEALED
- SPECIFIC CONSIDERATIONS
- 1. HEAVY FREQUENCY OF USE
 - 2. NOT EXPOSED TO WEATHER/CLIMATE (INTERIOR USE)
 - 3. MATERIAL: TEMPERED GLASS AND ALUMINIUM



OUTSIDE THE ROOM

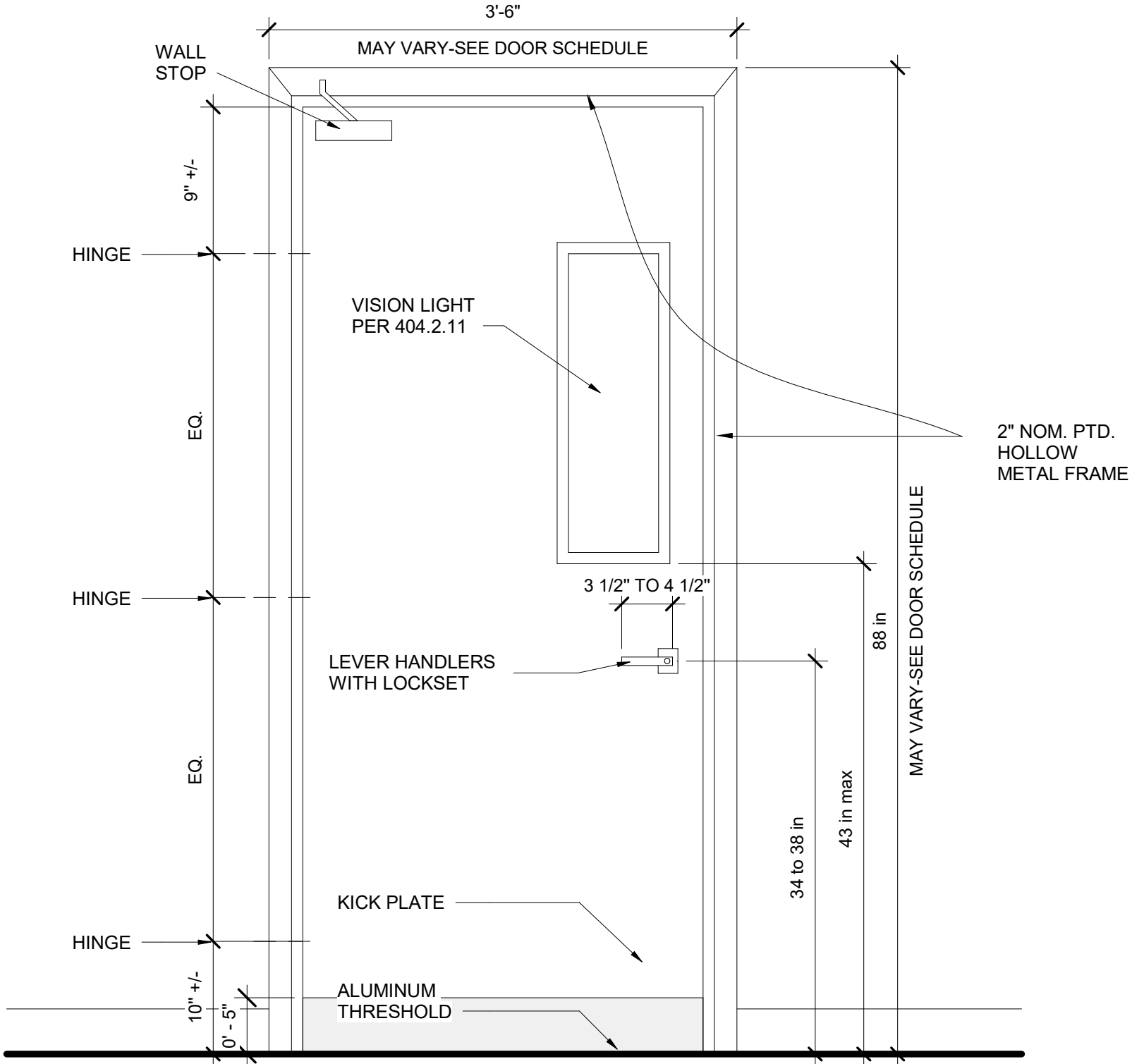


INSIDE THE ROOM

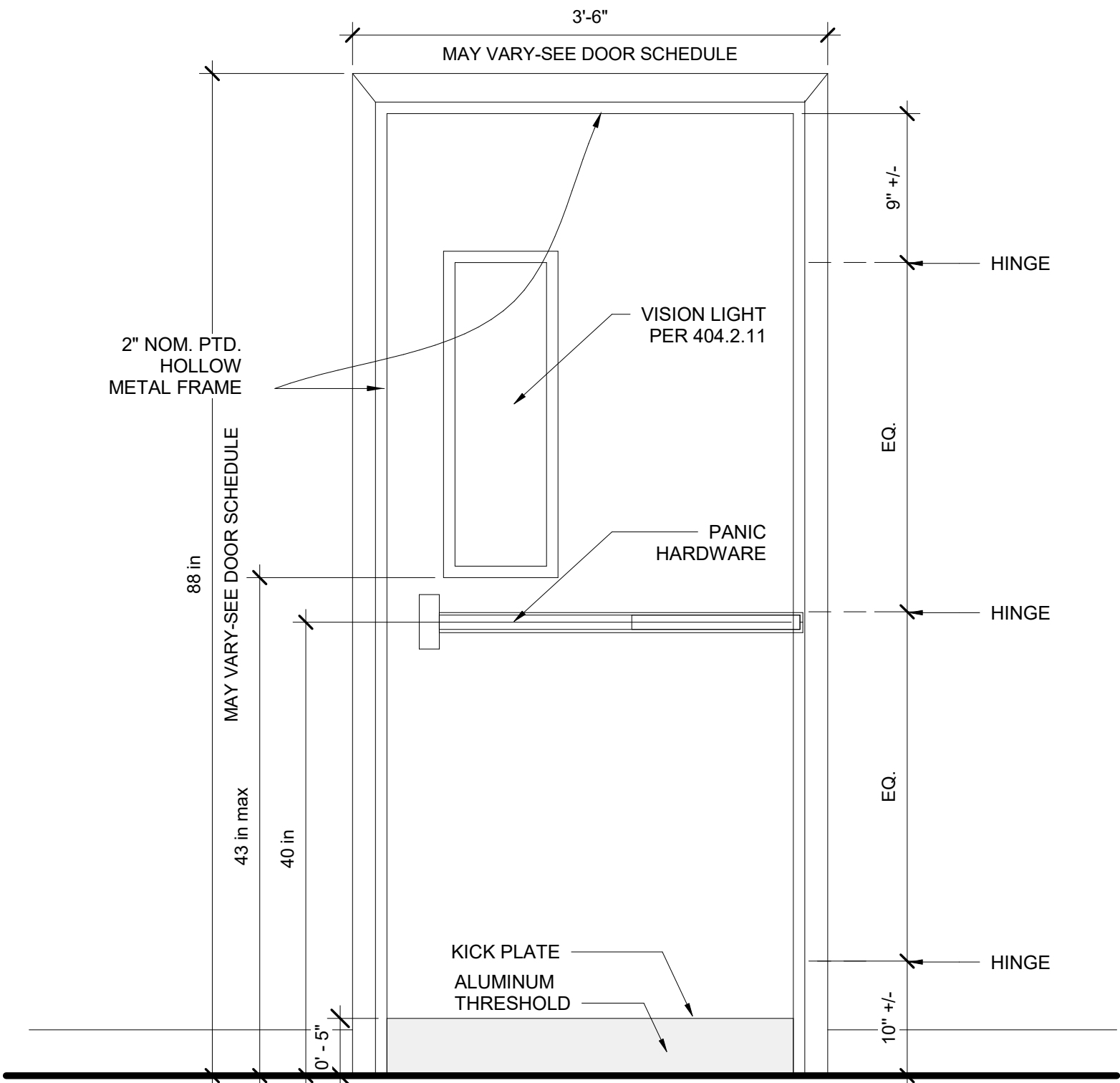
DOOR HARDWARE SET 3

GENERAL

- 1.DOOR HUNG TO THE FRAME WITH HINGES
 - 2. PANIC HARDWARE WITH LOCKSET
 - 3.THRESHOLD NEEDED
 - 4.SEALED AND PROTECTED DOOR (1HR RATED)
 - 5.NOT ELECTRIFIED DOOR
 - 6. DOOR MUST BE SEALED
- SPECIFIC CONSIDERATIONS
- 1. HEAVY FREQUENCY OF USE
 - 2. EXPOSED TO WEATHER/CLIMATE (EXIT DOOR)
 - 3. MATERIAL: ALUMINIUM



OUTSIDE THE BUILDING



INSIDE THE BUILDING

NOTE:
THE CONTRACTOR MUST
VERIFY ALL
DIMENSIONS IN THE FIELD
PRIOR TO
ORDERING AND
INSTALLATION

PLATO

STUDIO

PLATO

MARINAKOS, JR.

ARCHITECT, LLC

www.plato-studio.com

107 S 2nd Street
4th Floor
Philadelphia, PA 19106
267-866-0930 OFFICE
267-866-0931 DIRECT
plato@plato-studio.com

ARCHITECT SEAL MUST BE IN RED INK

OWNER

Vision Academy Charter School

ONE CALL #:



SITE SAFETY

It is the responsibility of the general contractor and/or the contractor listed as the licensed entity on the building permit per the municipality to ensure all site safety requirements are in place and followed, prior to, during, and after the commencement of the construction process until they are 100% complete and have received a building certificate of occupancy by governing agencies. They are also responsible for any unsafe conditions caused by or related to their sub-contractors' work. Plato Marinkos, Architect LLC, and their professional consultants (associated with these documents) are not responsible for means and methods of construction, and/or site safety, including, but not limited to, osha construction safety requirements, standard construction, job site safety, job site safety training of workers, safe work site organization, safety direction and/or safety engineering of required safety elements. It is the sole responsibility of the licensed contractor to ensure that all site safety measures are in accordance with the governing authorities. Please refer to OSHA website (www.osha.gov) for additional training and information requirements for site safety compliance.

REV	DATE	DESCRIPTION

APPROVAL STAMP

716 EMERSON AVE - SCHOOL

DOOR HARDWARE TYPES	
Project number	Project Number
Date	Issue Date
Drawn by	Author
Checked by	Checker
D202	
Scale	1" = 1'-0"

12/22/2022 3:39:13 PM

© COPYRIGHT 2021 Plato A. Marinakos, Jr. Architect, LLC

12/22/2022 3:39:13 PM